

Comprehensive selection of transducers

Curved array transducers



CA2-8AD

- Application : abdomen, obstetrics, gynecology



C2-8

- Application : abdomen, obstetrics, gynecology



C2-5

- Application : abdomen, obstetrics, gynecology



CF4-9

- Application : pediatric, vascular

Linear array transducers



LA3-16AD

- Application : small parts, vascular, musculoskeletal



LN5-12

- Application : small parts, vascular, musculoskeletal



L5-12/50

- Application : small parts, vascular, musculoskeletal



L4-7

- Application : abdomen, small parts, vascular, musculoskeletal



LS6-15

- Application : musculoskeletal

Volume transducers



VN4-8

- Application : abdomen, obstetrics, gynecology



V5-9

- Application : obstetrics, gynecology, urology



EVN4-9

- Application : obstetrics, gynecology, urology



ER4-9

- Application : obstetrics, gynecology, urology

Phased array transducer



PN2-4

- Application : abdomen, cardiac, vascular



SP3-8

- Application : abdomen, pediatric, cardiac



DP8B

- Application : cardiac, vascular



DP2B

- Application : cardiac

Endo-cavity transducers

CW transducer

Establish everyday efficiency

Ultrasound system
HS40 Powered by CrystalLive™



CT-HS40 V1.02-GI-FT-190417-EN

* This product, features, options, and transducers are not commercially available in all countries.
Due to regulatory reasons, their future availability cannot be guaranteed. Please contact your local sales representative for further details.
* This product is a medical device, please read the user manual carefully before use.

SAMSUNG MEDISON CO., LTD.

© 2019 Samsung Medison All Rights Reserved.
Samsung Medison reserves the right to modify the design, packaging, specifications, and features shown herein, without prior notice or obligation.

Scan code or visit
www.samsunghealthcare.com
to learn more



EXPERIENCE
A New Healthcare
Solution

SAMSUNG

Powered by CrystalLive™

CrystalLive™ is Samsung's up-to-date ultrasound imaging engine with enhanced 2D image processing, 3D rendering and color signal processing, to offer outstanding image performance and efficient workflow during complex cases.

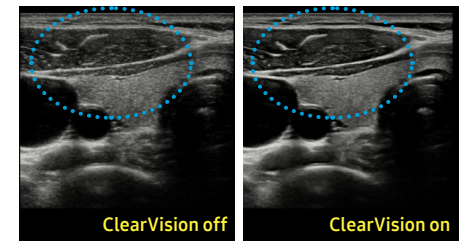


Extraordinary image quality for a clearer view

With the astonishingly clear view provided by Samsung's advanced imaging technologies, you can make clinical decisions with greater confidence.

ClearVision

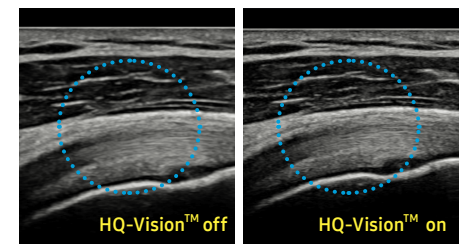
The noise reduction filter improves edge enhancement and creates sharper 2D images for optimal diagnostic performance. In addition, ClearVision provides application-specific optimization and advanced temporal resolution in live scan mode.



Thyroid

HQ-Vision™

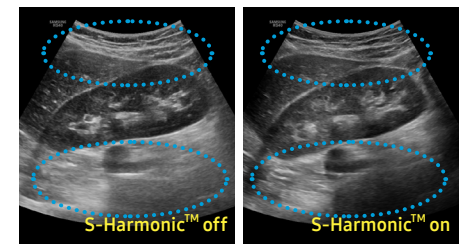
HQ-Vision™ provides clearer images by mitigating the characteristics of ultrasound images that are slightly blurred than the actual vision.



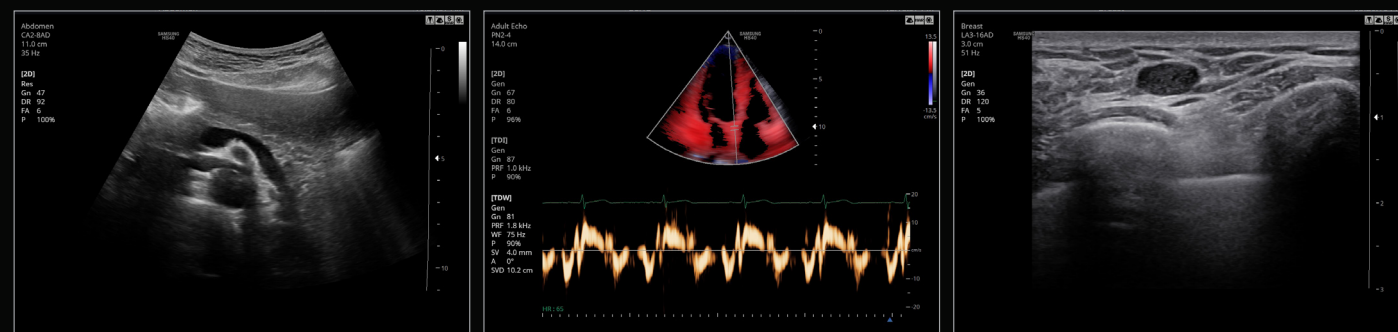
Shoulder

S-Harmonic™

S-Harmonic™ reduces signal noise and provides more uniform ultrasound images by improving near to far image clarity.



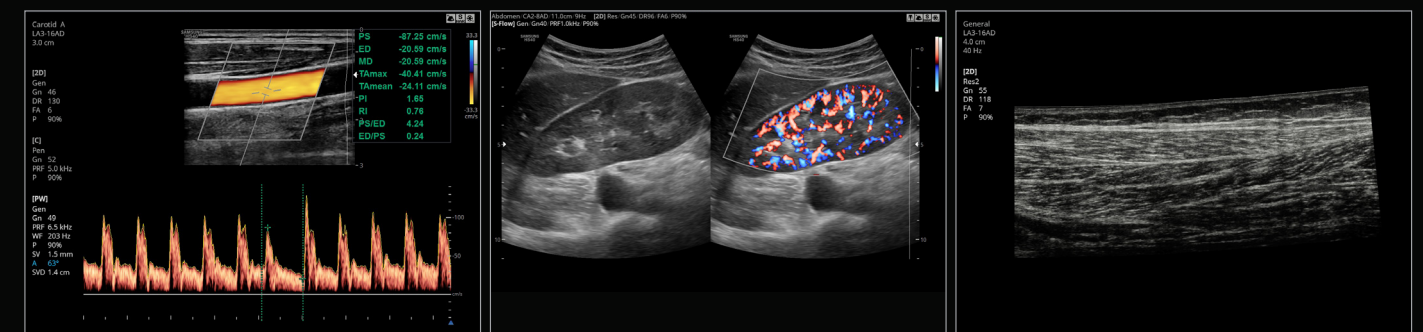
Kidney



Pancreas

Adult echo in TDW

Breast



CCA in PW

Kidney in S-Flow™

Panoramic

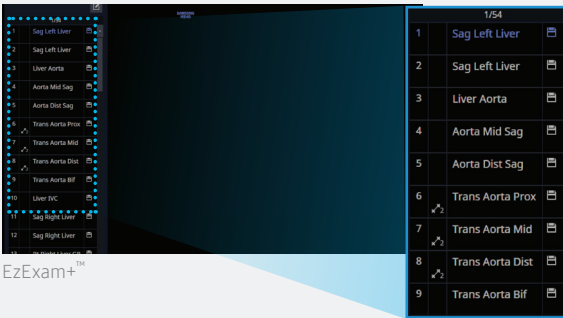
Enhanced tools for optimized care

Samsung's advanced yet budget-friendly tools, previously exclusive to our premium ultrasound platforms, enhance vascular, cardiac, musculoskeletal, and small parts exam capabilities for efficient and effective care.



EzExam+™ *

EzExam+™ enables you to build or use a predefined protocol, and assign protocols for examinations that are regularly performed in the hospital in order to reduce the number of steps that you have to go through.



QuickPreset

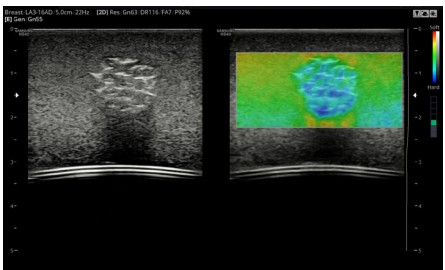
With one touch, the user can select the most common transducer and preset combinations. QuickPreset maximizes efficiency to make a full day of scanning simple and easy.



CA2-8AD

ElastoScan™ *

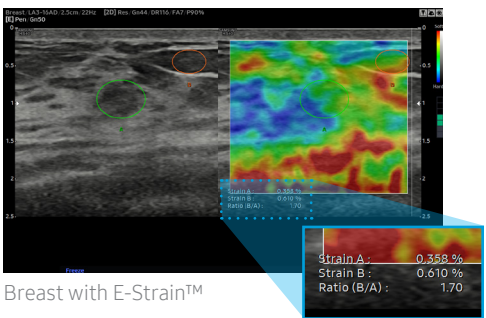
A diagnostic ultrasound technique for imaging elasticity, ElastoScan™ detects the presence of solid masses in tissues and converts any stiffness into color images.



ElastoScan™ (Phantom)

E-Strain™ *

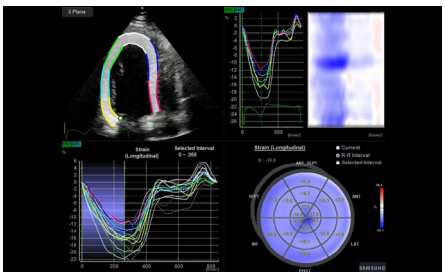
E-Strain™ is designed to enable quick and easy calculation of the strain ratio between two regions of interest for day-to-day practice. Simply by setting the two targets, you can receive accurate, consistent results and make informed decisions in many types of diagnostic procedures.



Breast with E-Strain™

Strain+™ *

Strain+ is a quantitative tool for global and segmental wall motion of the left ventricle (LV). In Strain+, three standard LV views and a Bull's Eye are displayed in a quad screen for easy and quick assessment of the LV-function.



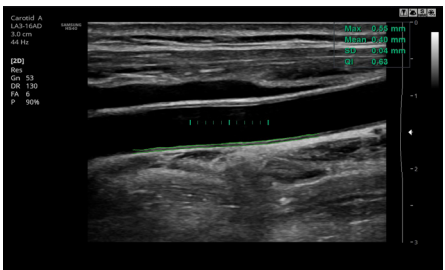
Adult echo

StressEcho™ *

The StressEcho package includes wall motion scoring and reporting. It includes exercise StressEcho, pharmacologic StressEcho, diastolic StressEcho and user-programmable StressEcho.

AutoIMT+™ *

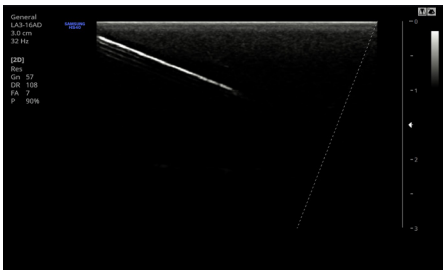
AutoIMT+ is a screening tool to analyze a patient's potential risk of cardiovascular disease. It allows easy intima-media thickness measurement of both the anterior and posterior wall of the common carotid by the click of a button.



CCA with AutoIMT+

NeedleMate+™ *

With pinpoint precision, NeedleMate+™ delineates needle location when performing interventions such as nerve blocks. Improved accuracy and efficiency in procedure are possible with beam steering added to NeedleMate™.



NeedleMate+™ (Phantom)

* Optional Extra

User-friendly design

HS40's ground-breaking design was inspired by users' ideas and suggestions during development. Every detail, such as the fully articulating monitor arm, the operating panel which can be easily adjusted to different heights, and additional storage space, has been created to make the work environment more comfortable. And it is this focus on the user that has led to the product winning a prestigious 2017 iF Design Award.



Solid State Drive (SSD)

The HS40 uses Samsung's advanced solid state drives. These stable and dependable drives allow faster boot-up, better frame rates, and fast processing speeds.



BatteryAssist™

BatteryAssist™ provides the system with battery power. This serves two important purposes. Firstly, it enables users to perform scans and transport the ultrasound system to other locations in environments where AC power may not be available temporarily. Secondly, it reduces boot-up time by using sleep mode without having to shut down or restart the system.

Articulating monitor arm

With a wide range of motion, the fully articulating monitor arm adapts to your changing needs.



Height-adjustable operating panel

Adjust the operating panel to your preferred height without straining, thanks to the smooth upward and downward motion of the gas lift.



Endocavity transducer holder *

HS40 features an endocavity transducer holder, side-mounted on the console for convenience when performing gynecological scanning.



Gel warmer *

Two-level adjustable gel warmer maintains ultrasound gel at a comfortable temperature.



Side storage *

The side storage is ideal for storing a tablet, patient charts, or other items that you need to keep close at hand.



Rear tray *

HS40's rear tray provides extra storage space for the endocavity transducer and other items.



Low noise

This exceptionally quiet device allows physical exams to be performed, including auscultation, while the ultrasound system is turned on.



Printer cover *

The user-friendly cover tidies and hides away printer cables that may otherwise become tangled.

